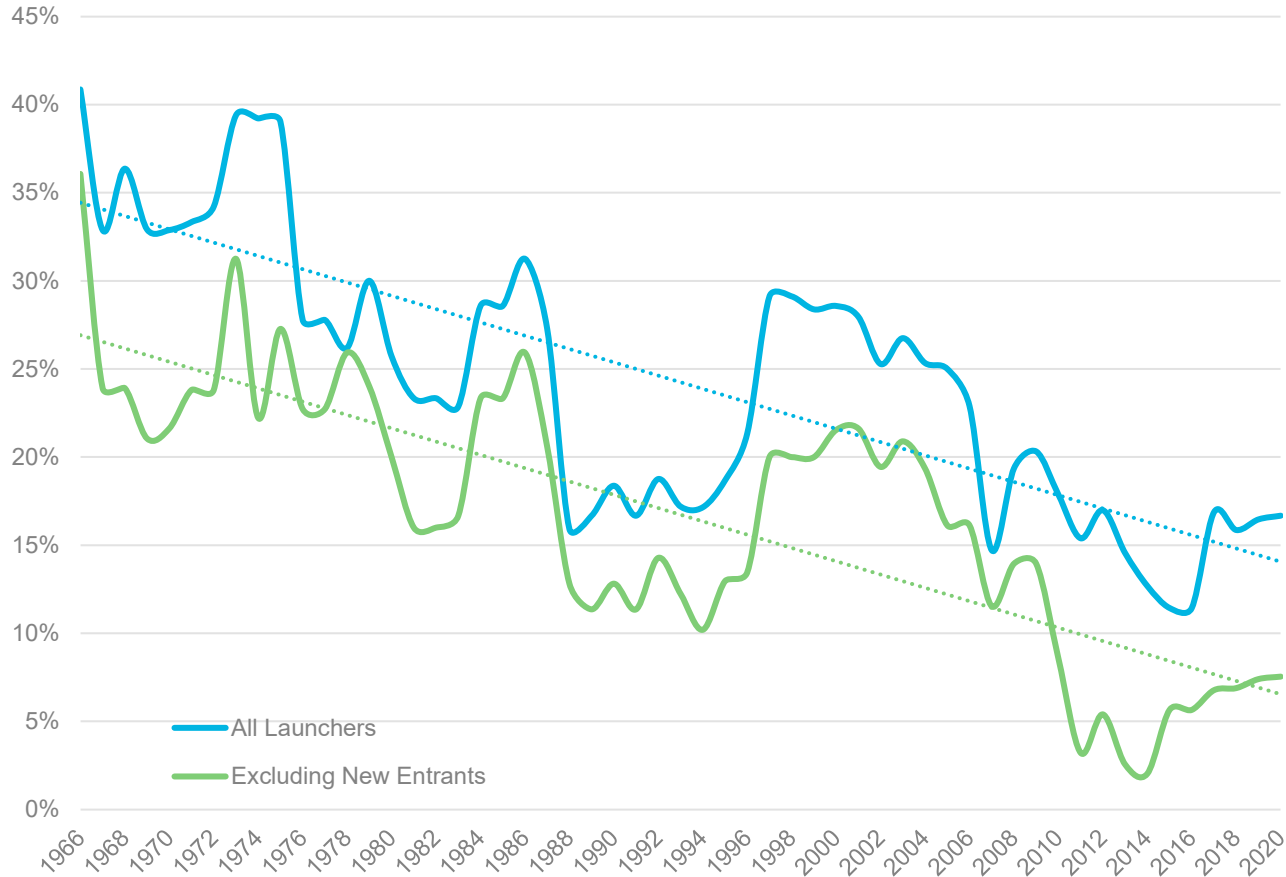


# Impact of Manufacturer Experience on reliability of new launchers

Failure rate of the first 5 launches, for all launchers introduced in a 10-year sliding window

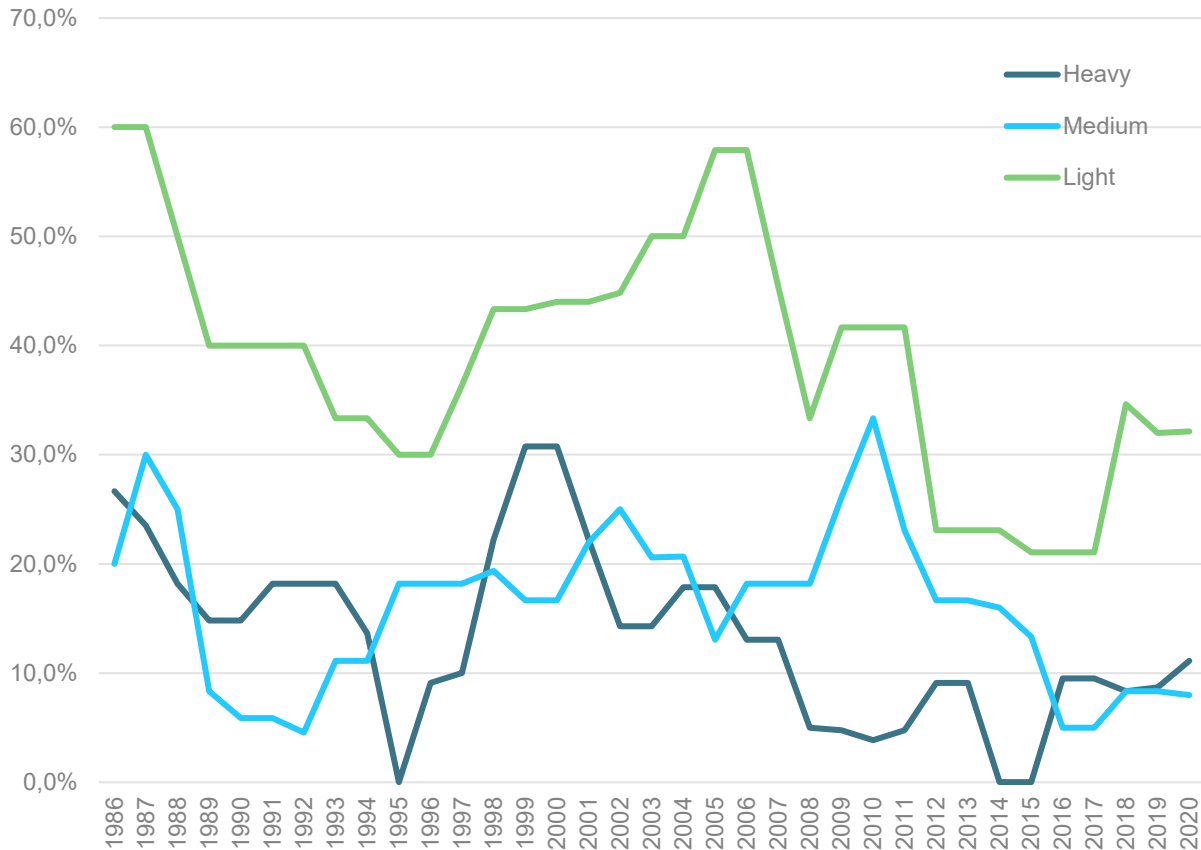


In 2021, the failure rate of the first 5 launches of all launchers that have been introduced in the last 10 years (i.e. since 2011) is:

- **16,7%** all launchers
- **7,6%** excluding launchers built by new entrants

# Impact of Launcher Category on the reliability of new launchers

Failure rate of the first 5 launches for all launchers introduced in a 10-year sliding window, sorted by type



In 2021, the failure rate of the first 5 launches that have been introduced in the last 10 years (i.e. since 2011) is:

- 32.1% for Light launchers
- 8% for Medium launchers
- 11.1% for Heavy launchers

# The Production Challenge

Average Failure rate over windows of 5 launches  
for all launchers introduced since 1996

